

# ONE 60

## Business/Carrier Class IP Router



The *ONE 60* provides small and medium businesses with reliable and secure access for high-speed Internet/IP-VPN connections. Designed for multiple uplink types, the device fulfills customer requirements for current and future access technologies. Combined with rich and consistent management functions available in the *ONE* Range of products, the *ONE 60* greatly simplifies deployment and maintenance. A comprehensive feature set including backup, security and IP Quality of Service delivers value added services to customers and increases revenues for service providers.

### High Quality of Service

Advanced ATM and IP Quality of Service mechanisms are embedded in the *ONE 60* hardware and software. Built-in management tools monitor QoS indicators and provide traffic analysis for rapid diagnostic and troubleshooting. As a result, network resources are optimized and delivery of customer support is enhanced. Best-in-Class Quality of Service ensures consistency in the delivery of voice and video applications as well as premium rate services.

### High Availability

Continual access to the Internet is provided through an Optional ISDN S0 network interface, which can be used for backup of IP services or as an access point for telecommuters or remote equipment configuration.

### Enhanced Security

A robust firewall with Stateful Packet Inspection and optional encryption engine provides enhanced security to protect critical data assets and deliver secure, high-speed connections for applications outsourcing and telecom-muters.

### Ease of Management and Provisioning

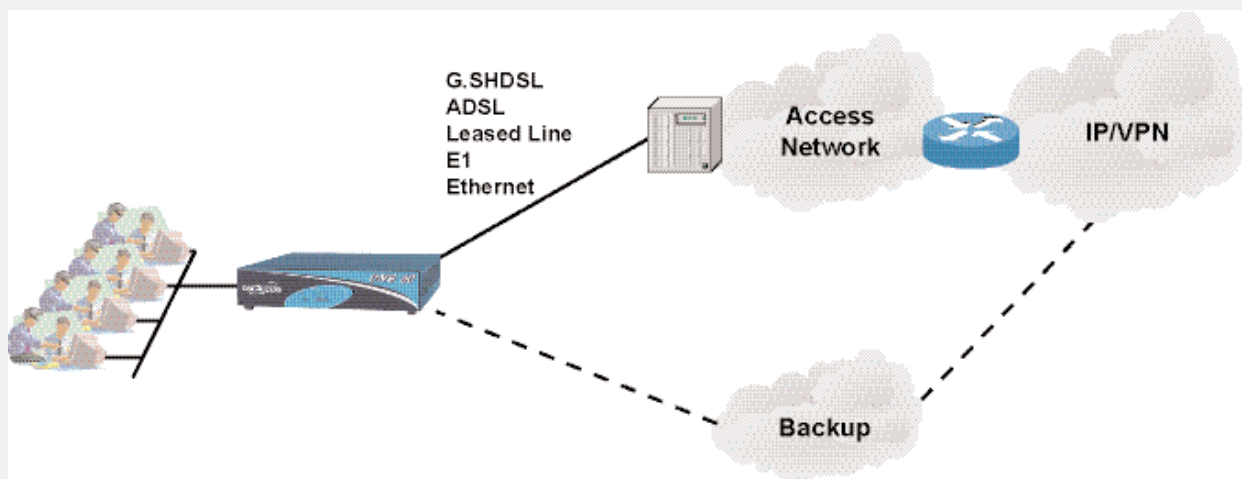
A secure web interface features an intuitive configuration tool that reduces the need for installation, product training or hotline assistance. Simplified management reduces user inter-vention and speeds wide-scale deployment at lower cost.

### Flexible Options

Designed for use with multiple access technologies, the *ONE 60* offers a standard Leased Line uplink or E1/T1 interface. The device also uses ADSL, SDSL and SHDSL uplinks to address the growing accessibility to xDSL.

Available with one or more factory-installed options including a multi-port Ethernet interface, V.xx serial port, ISDN S0 backup interface and an encryption engine, the modular and flexible design of the *ONE 60* addresses a diverse number of customer requirements in one compact unit.

# Technical



## ONE 60 Specifications

### Product Architecture

#### Uplink Interfaces:

- ADSL (T1.413, G.992.1 annex A, B, G.992.2)
- SHDSL (2 or 4 wires), SDSL 2B1Q Fixed Rate
- E1/T1 (FR-PPP or ATM)

#### Basic Configuration:

- 1 Ethernet base T 10/100 Mbps
- Uplink: ADSL/SDSL/G.SHDSL/E1/T1 or no uplink interface
- 1 Console port V.28

#### Factory Options:

- 1 Serial WAN port V.11/V.35/V.28/V.36 DTE/DCE (uplink or user port up to 8 Mbps)
- 4 additional Ethernet 10/100 Mbps ports
- IPSEC encryption accelerator module

### Optional Daughter Board

- 1 SO for IP backup and remote access
- 1 V.90 modem (PSTN)
- 2 x V.28 (X.25 or PAD)
- 2 x V.28 (X.25 or PAD) + 1 V.90 modem (PSTN)

### IP Services

- IP classification and traffic conditioning (DiffServ), CB-WFQ, WRED
- NAT/NAPT (N to M, two-way, twice NAT, application pass-through)
- DHCP client, server, relay
- DNS proxy
- Routing: static, RIP v2, BGP, OSPF, policy-based
- Tunneling: GRE, L2TP
- VRRP
- Server load balancing

### Security

- IP sec with optional hardware acceleration (\*)
  - AES/DES/3DES encryption
  - Tunnel and transport mode
  - IKE and PKI
  - AH, ESP with SHA1 and MD-5 hashing
- Firewall (filtering and content analysis)
- VLAN IEEE 802.1q

### Management Services

- CLI and SNMP (V.1, V.2, V.3) manageable
- FTP/TFTP for software, configuration and script downloading
- Statistics and event recording
- Traceroute, traffic generator
- Performance agent
- AAA/Radius, Tacacs+

### PPP

- PPP over ATM (rfc 1483), PPPoE (rfc 2516), PPP over serial
- Automatic IP parameter assignment
- PAP/CHAP authentication
- MLPPP over ISDN, Bandwidth on demand

### ATM

- ILMI V4.0
- OAM-F5
- UNI 3.1
- AAL-5
- UBR, CBR, VBR
- IPoA, PPPoA, PPPoEoA

### FR

- QoS management
- LMI: T1.617, Q.933a
- FRF.12

### Interworking Functions

- FRF.5
- FRF.8
- X.25 over TCP/IP

### Hardware Compliance

- MTBF: 450,000 hours
- Dimension: 20 cm (W) x 21 (D) x 5 (H)
- Weight: 1,1 kg
- Temperature between 0°C and 45°C
- Humidity between 5% and 85%
- Regulatory compliance : IEC 950 class 2, EN55022, EN300386, EN55024, UL/CSA, FCC class B
- CE Mark (63-23 and 89-386)
- External power supply 90-250 V AC 50-60 Hz

(\*) Please check with OneAccess marketing for availability.

OneAccess reserves the right to change the technical characteristics described in this document without prior notice. Printed in France.



Immeuble Expansion 10 000 - 28, rue de la Redoute - 92266 Fontenay-aux-Roses Cédex - France  
 Phone + 33 (0)1 41 87 70 00 Fax + 33 (0)1 41 87 74 00  
 Website : <http://www.oneaccess-net.com> - E-mail : [contact@oneaccess-net.com](mailto:contact@oneaccess-net.com)